

[HTTP://WWW.RADIOCOLLECTION.BE](http://www.radiocollection.be)

SÉRIE RADIO 59-60

RÉCEPTEUR UNIVERSEL 5104

NOTICE TECHNIQUE

CARACTÉRISTIQUES - MISE EN SERVICE - SERVICING

ATELIERS DE CONSTRUCTIONS ÉLECTRIQUES DE CHARLEROI

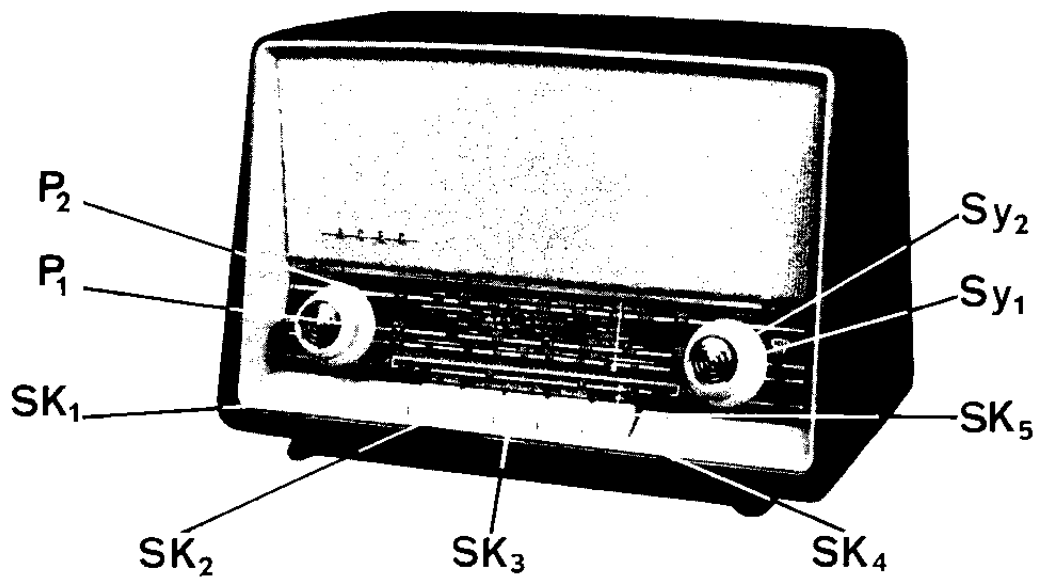


Fig. 1

Récepteur universel 5104, vue de face

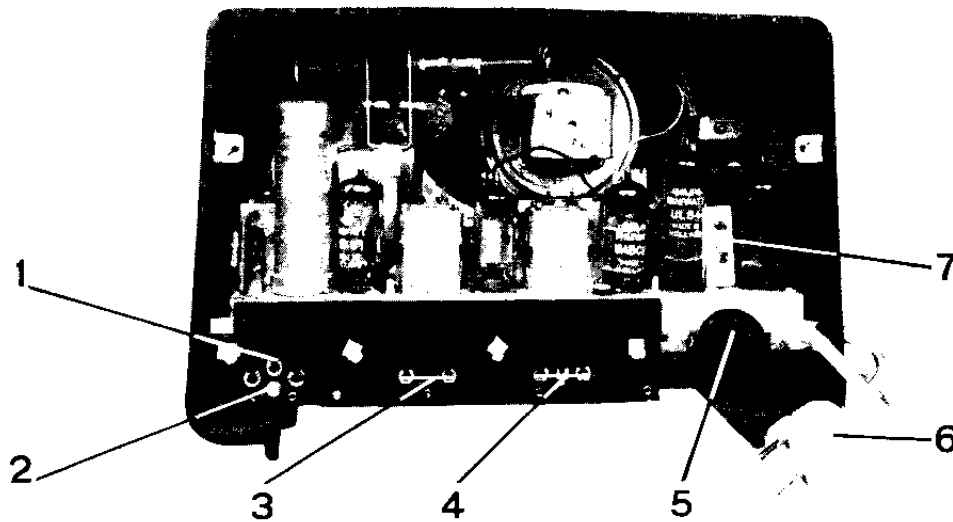


Fig. 2

Récepteur universel 5104, vue arrière carton de dos enlevé

- | | | | |
|---|-----------------------|---|-----------------------------|
| 1 | Douilles d'antenne | 5 | Adaptateur index de tension |
| 2 | Lame-contact | 6 | Fiche secteur |
| 3 | Prise de HP extérieur | 7 | Fusible |
| 4 | Prise P-U | | |

S	4.	7.	A1.	E2.	B.C
	77.85.	74.	79.84.82.72.	76.80.73.75.3.70.71.49.25.37.39.65.68.29.51.6.	
R	55. 47a	47.43.48.52.49.46.56.	42.	50.40.51.41.38.29.	31.24.21.35.

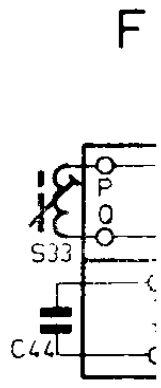
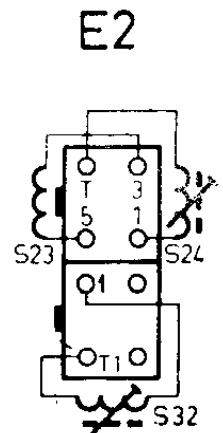
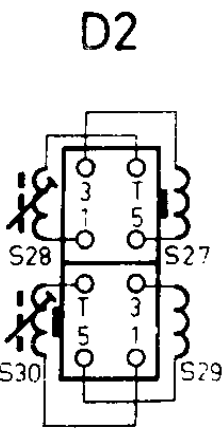
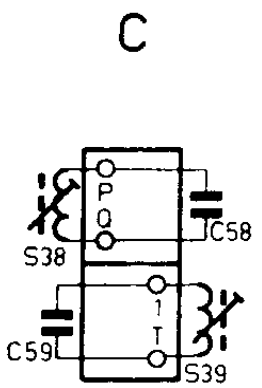
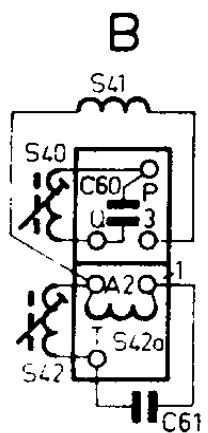
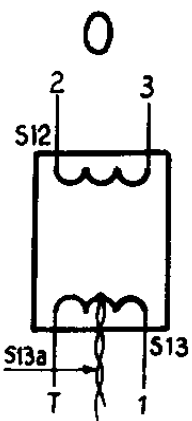
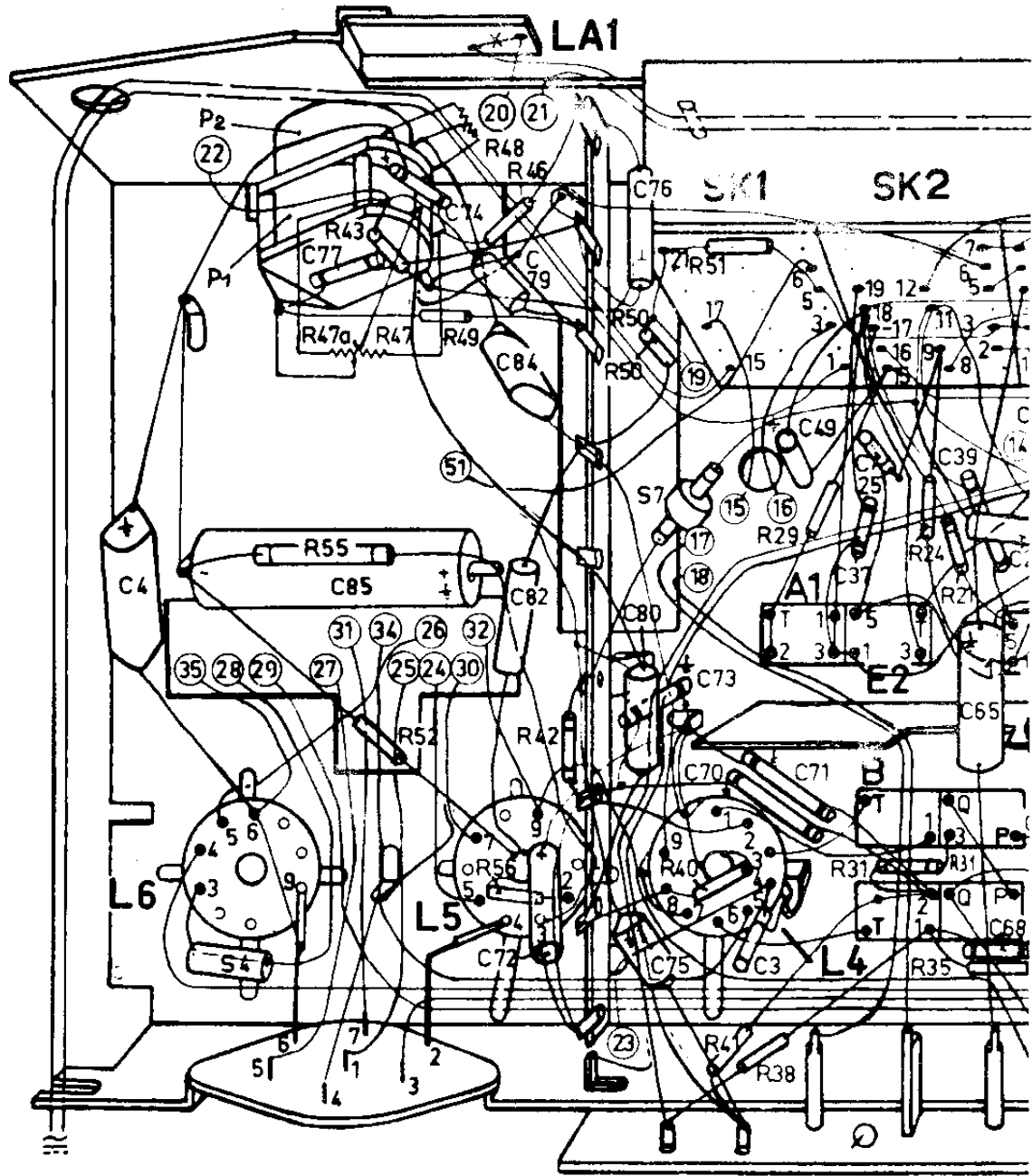
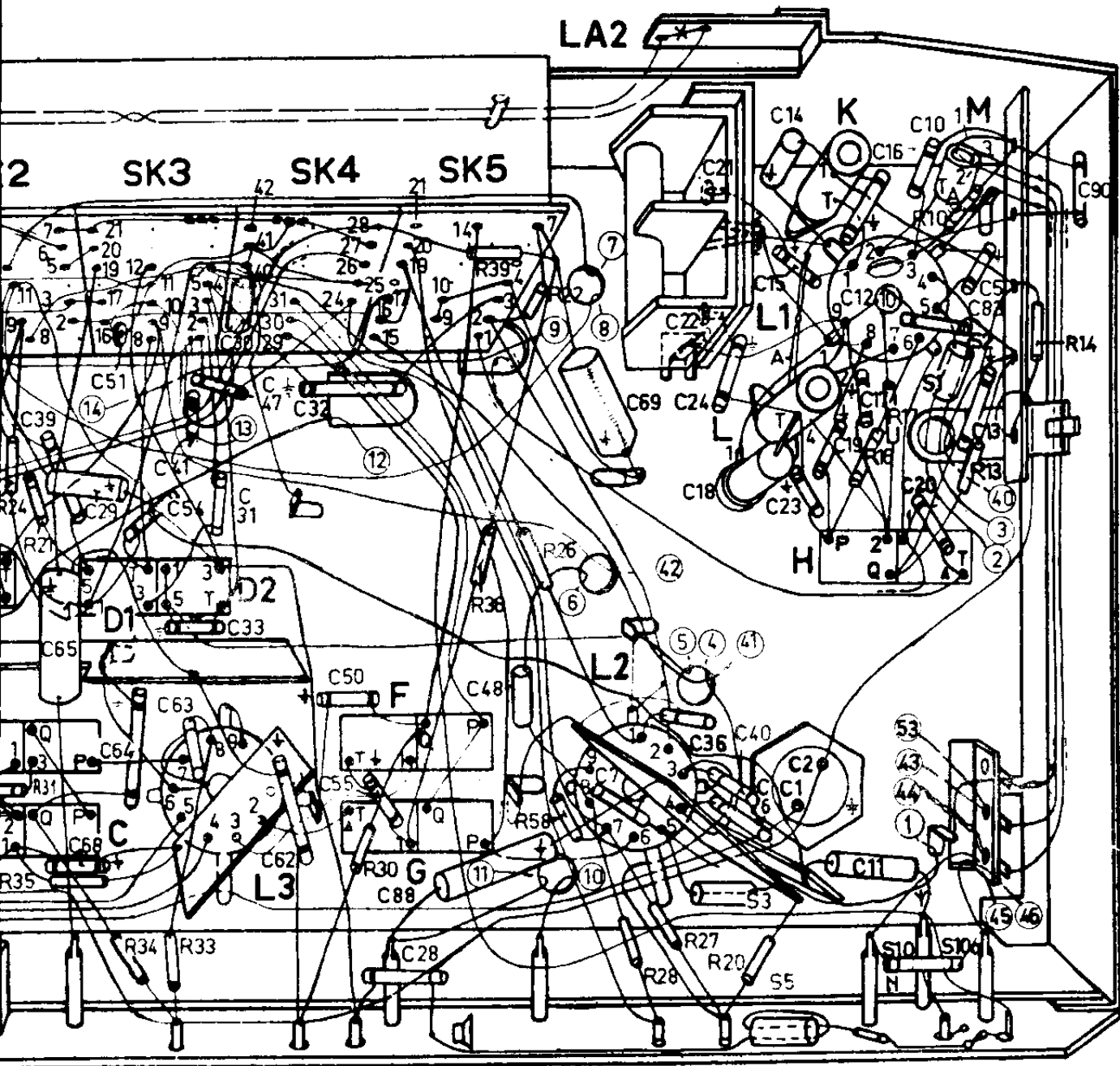


Schéma de câblage radio
Vue du dessous et repérage des groupes

B.C	D1.	D2.	FG.	5.3.	L.H.K.	10.10a.M.1.2.
68.29.51.64.54.	30.33.63.31.47.41.62.28.32.50.55.88.48.	69.7.36.21.22.40.6.24.18.14.15.23.1.2.19.16.10.12.10.20.5.13.83.	90.			
21.35.	34.33.	30	39.36.26.22.58.28.27	20	16.17	10.13.14



F G H K L M

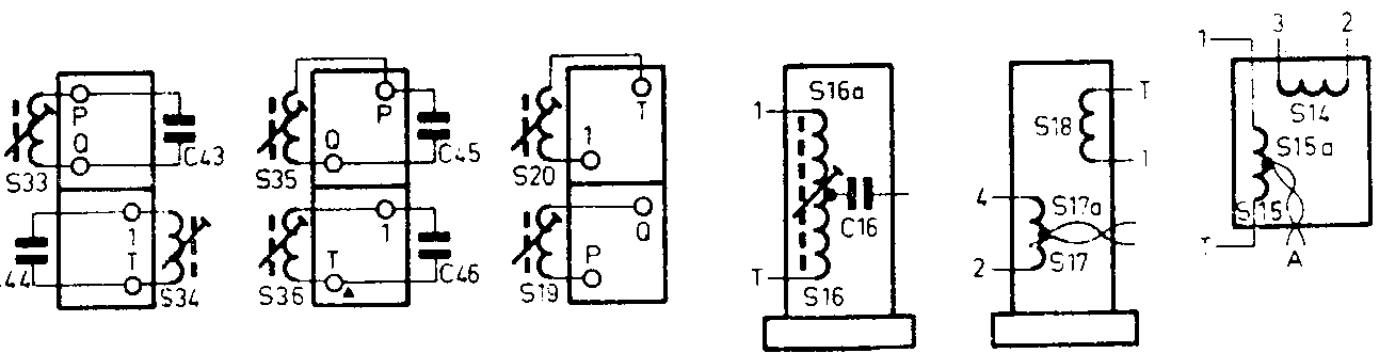
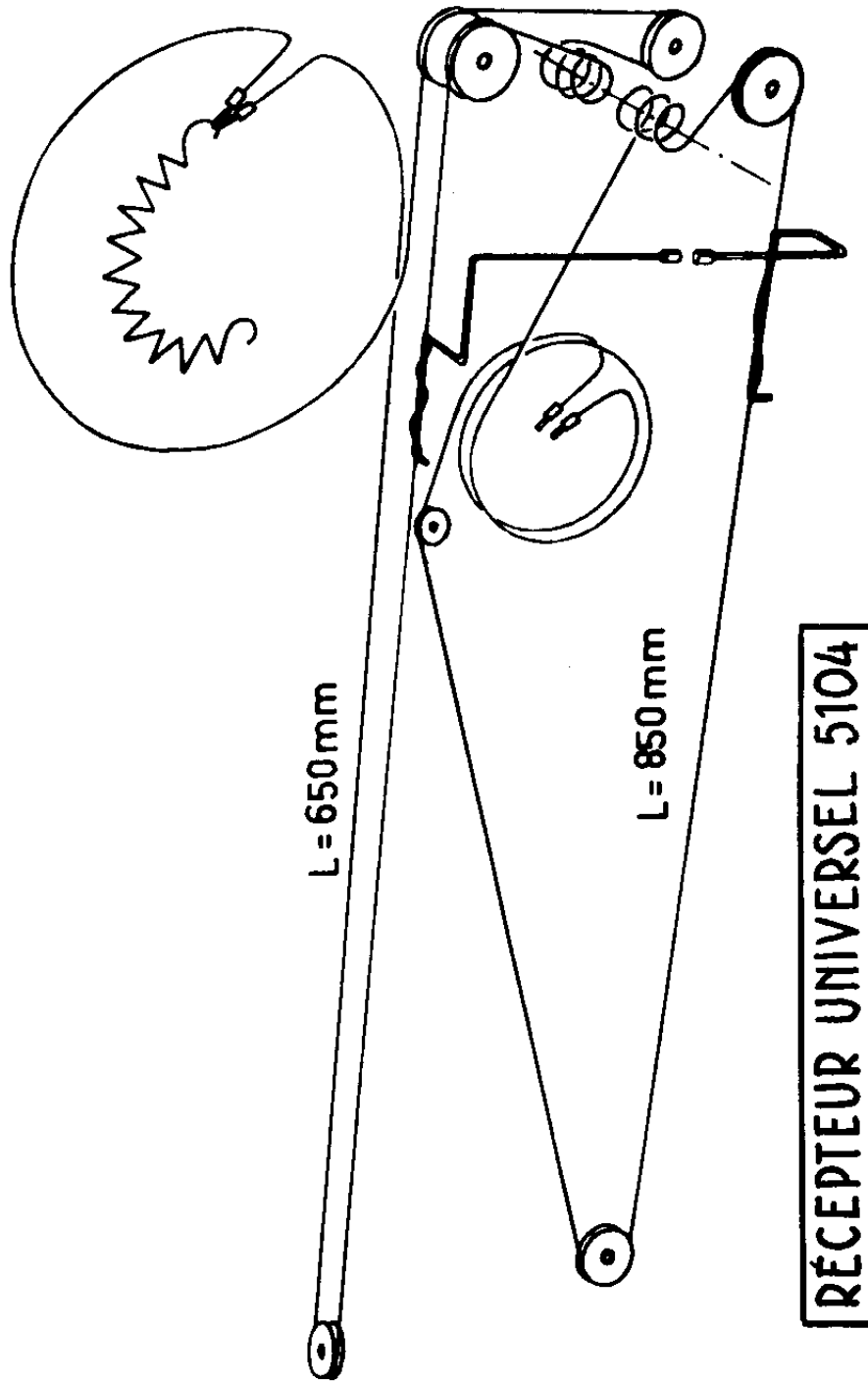


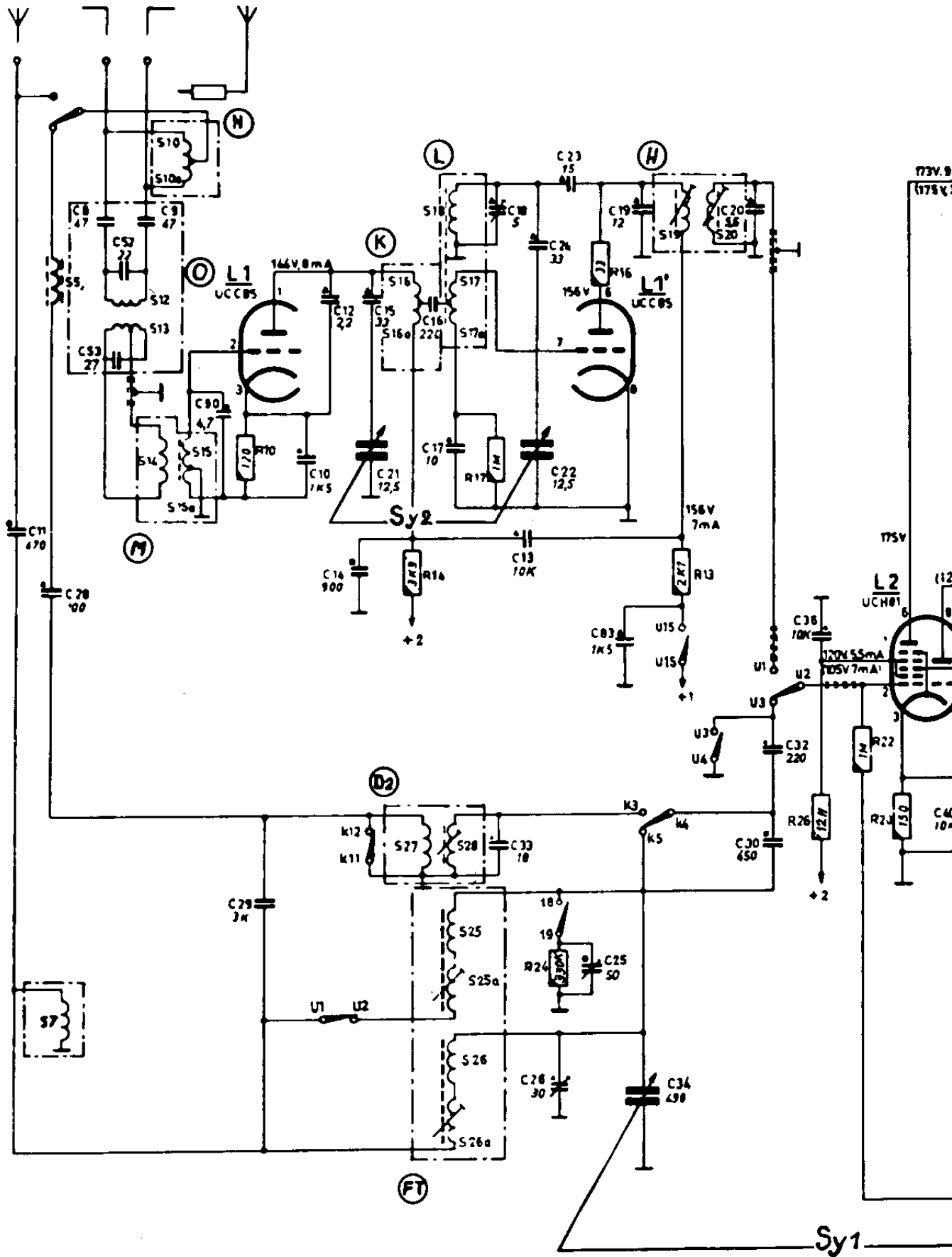
Fig 5

RÉCEPTEUR UNIVERSEL 5104



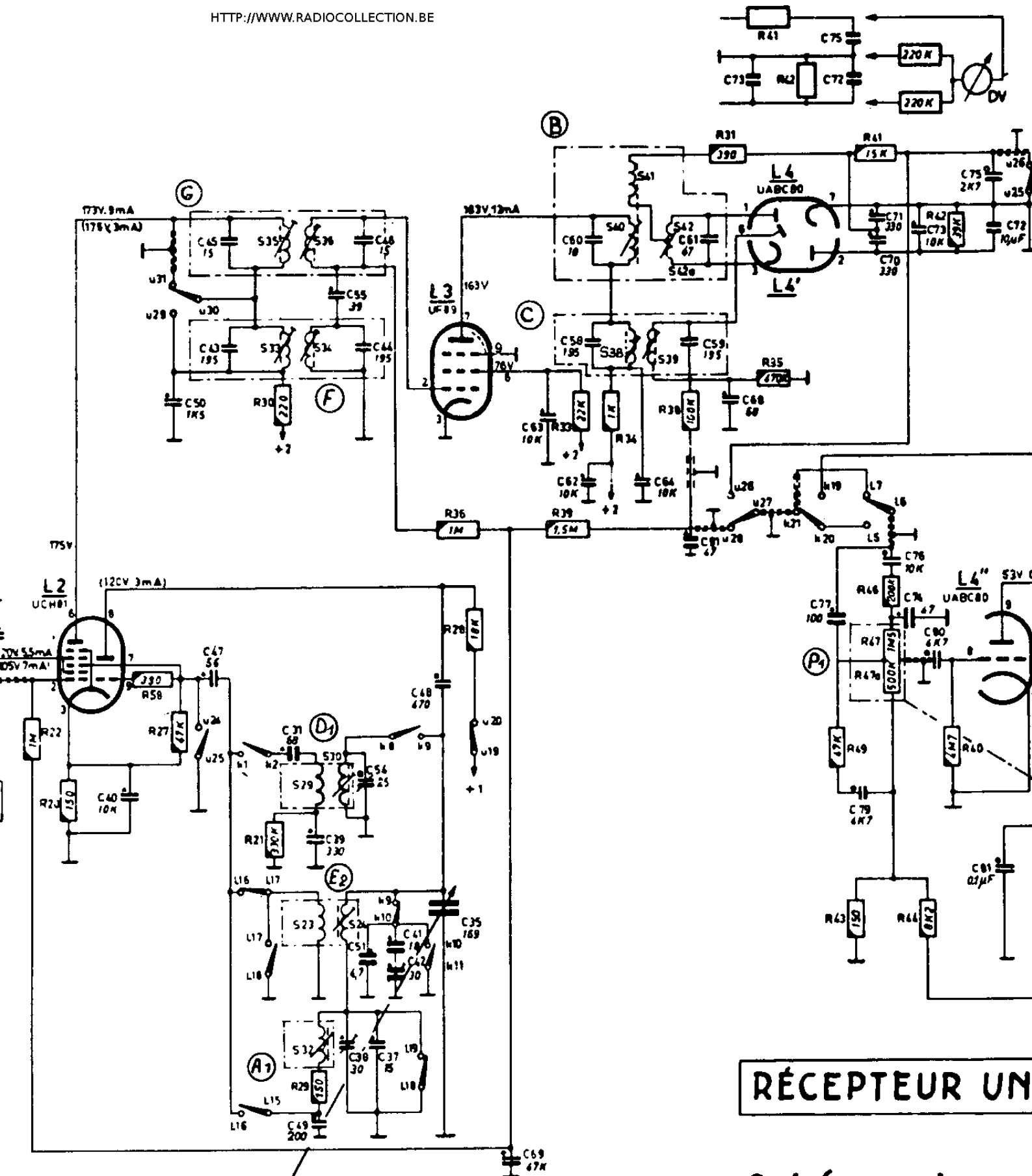
RÉCEPTEUR UNIVERSEL 5104

S	7	S	12, 13	10, 10a	14, 15	15a	16	16a	17	17a	18	27	28	28a	25	25a	19	20													
R									14		17		24		16		13	26	22	20											
C	11	28	8	52	53	9	9a	29	10	12	14	15	21	16	17	18	38	24	22	26	13	23	25	19	34	83	20	30	32	36	



72	20	58	27	30	21	28	36	18	39	33	34	38	31	1	75	43	40	61	44	47	46	42	40	2	3	4	5	6	50	5											
40	50	47	45	43	31	39	48	38	95	44	54	41	37	42	35	48	51	69	63	80	58	62	64	61	91	59	2	1	68	77	79	70	71	78	4	73	74	80	81	75	72

HTTP://WWW.RADIOCOLLECTION.BE

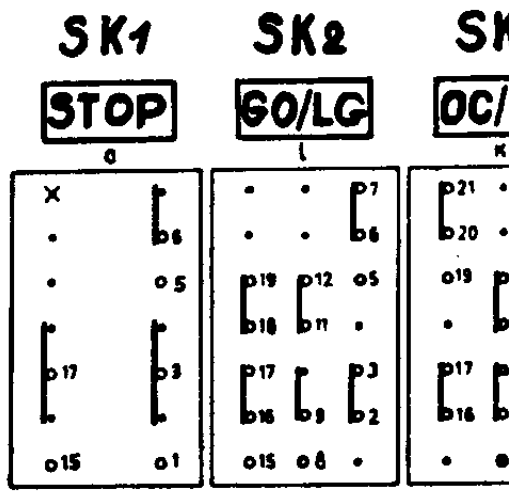
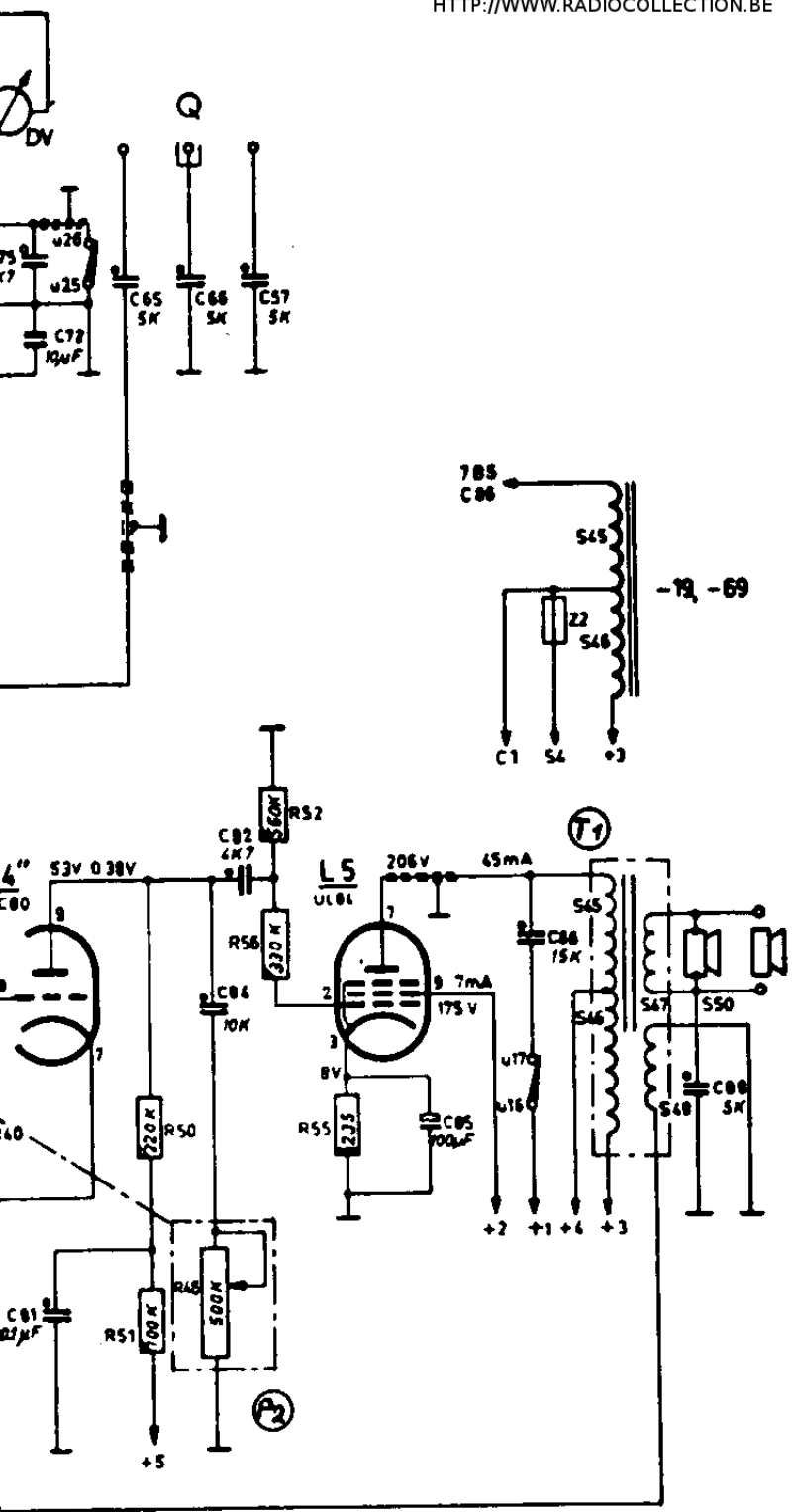


RÉCEPTEUR UN

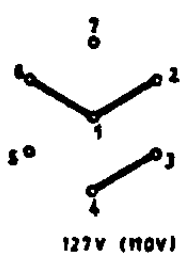
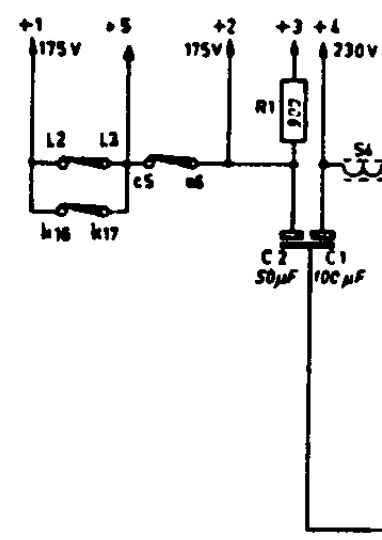
Schéma de pr

1.2.3. 45 46 47/48 50									
49. 50. 51.	49.	50. 51. 52.	85. 5.6.7.8.9. 3.				88		
5.72.	65. 84.	66. 82. 87.							

HTTP://WWW.RADIOCOLLECTION.BE

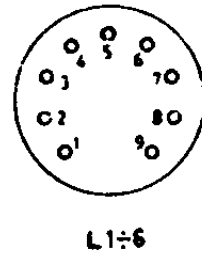
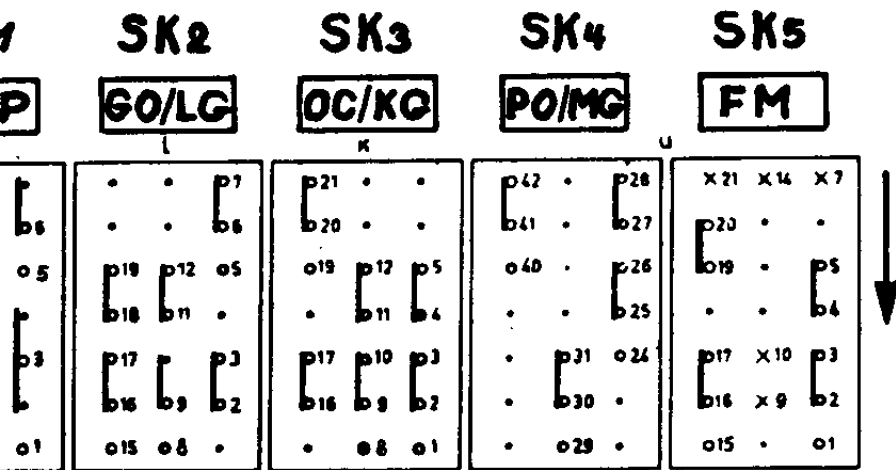


Remarques : - Tous les contacts sont...
 - L'action sur la tou...
 - L'action sur la tou...
 - La commutation P...



UNIVERSEL 5104

principe radio



ES : Tous les contacts sont représentés pour le récepteur à l'arrêt

- L'action sur la touche SK4 enclenche uniquement les contacts de SK1 (mise en marche)
- L'action sur la touche SK5 enclenche les contacts des deux secteurs SK4 et SK5
- La commutation P.U. s'obtient en appuyant simultanément sur SK2 et SK3

