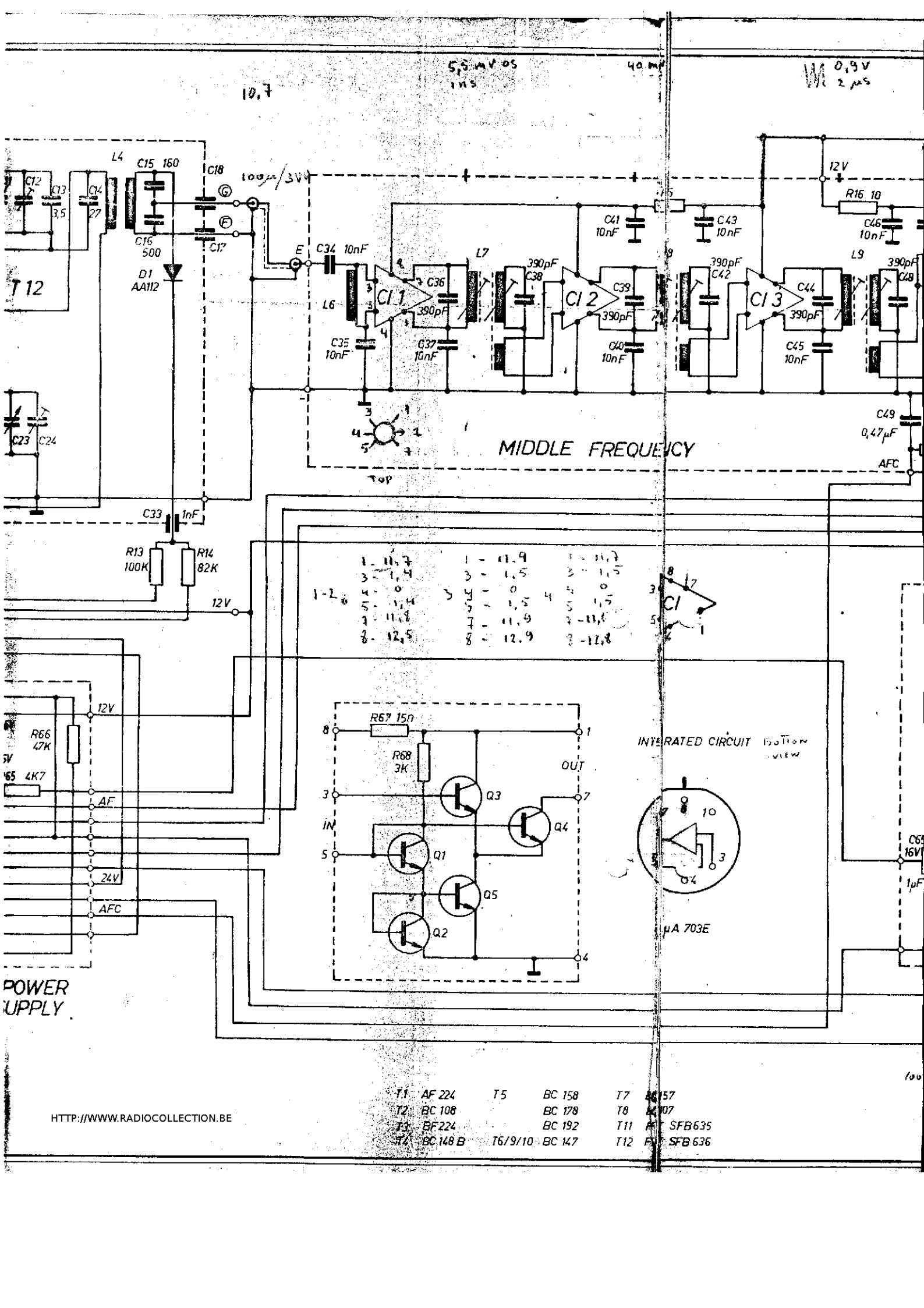


SERVO-SOUND

SOLID STATE F.E.T. MULTIPLEX FM STEREO TUNER



10,7

5,5 mV 0,5
1 mS

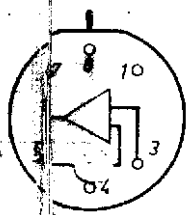
40 mV

0,9 V
2 μS

MIDDLE FREQUENCY

1 - 11,7	1 - 11,9	1 - 11,7
3 - 1,4	3 - 1,5	3 - 1,5
4 - 0	4 - 0	4 - 0
5 - 11,4	5 - 1,2	5 - 1,5
7 - 11,8	7 - 11,9	7 - 11,8
8 - 12,5	8 - 12,9	8 - 12,8

INTEGRATED CIRCUIT Bottom view



μA 703E

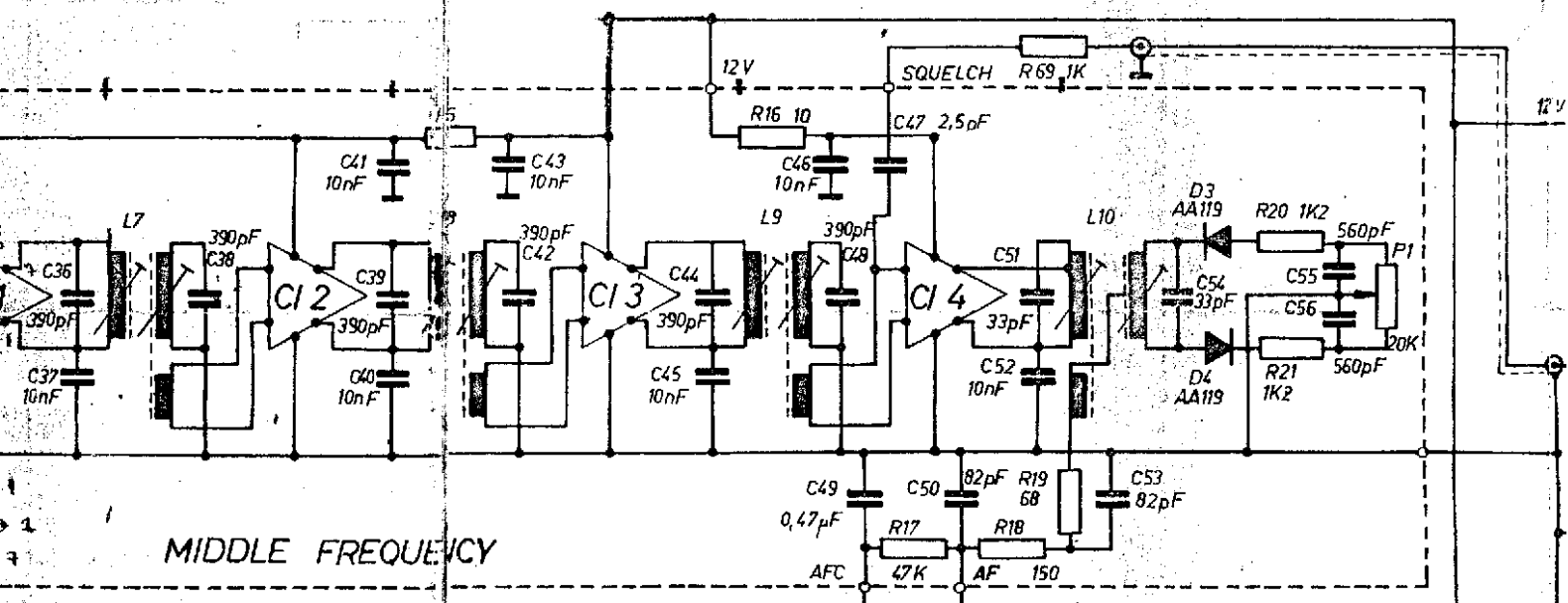
POWER SUPPLY

- | | | |
|-------------|----------------|-------------|
| T1 AF 224 | T5 BC 158 | T7 40157 |
| T2 BC 108 | T6 BC 178 | T8 40107 |
| T3 BF 224 | T7 BC 192 | T11 SFB 635 |
| T4 BC 148 B | T6/9/10 BC 147 | T12 SFB 636 |

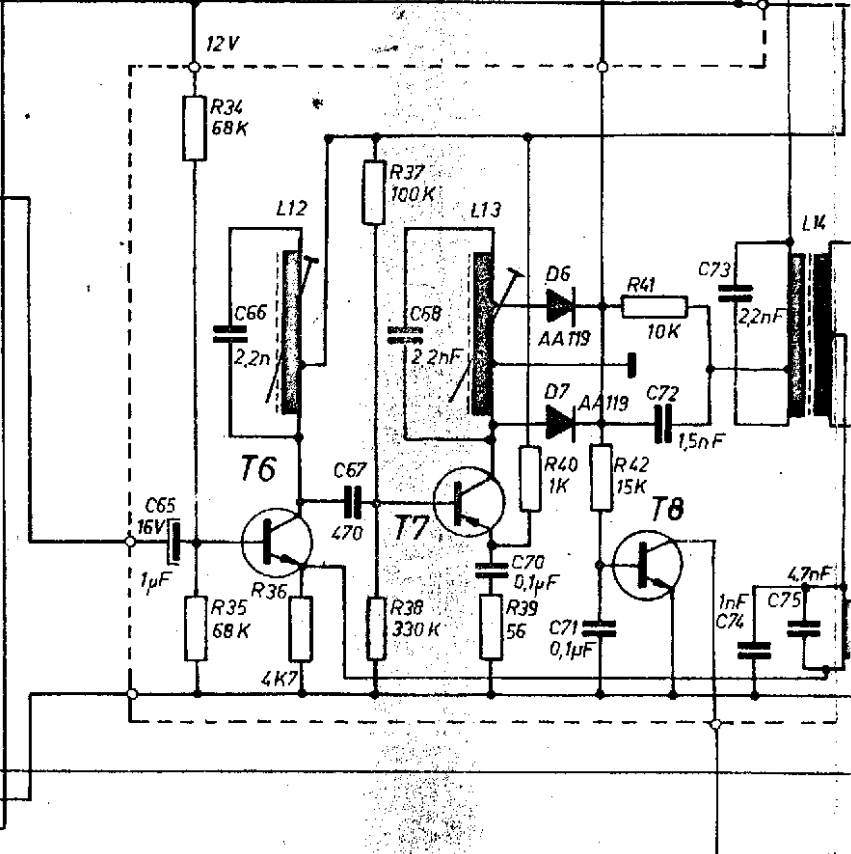
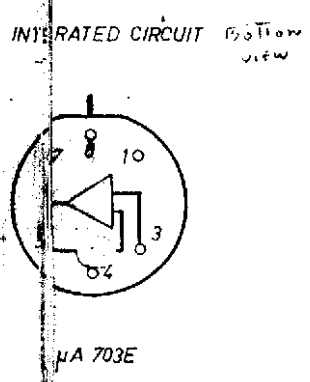
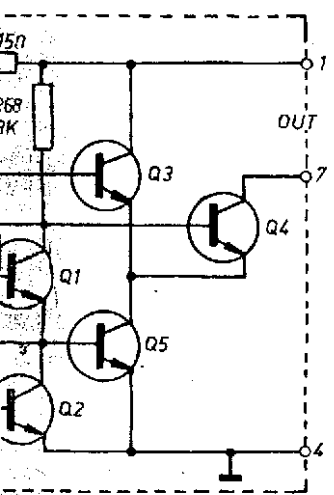
5,5 mV OS
1ms

40 mV

0,9 V
2 μs



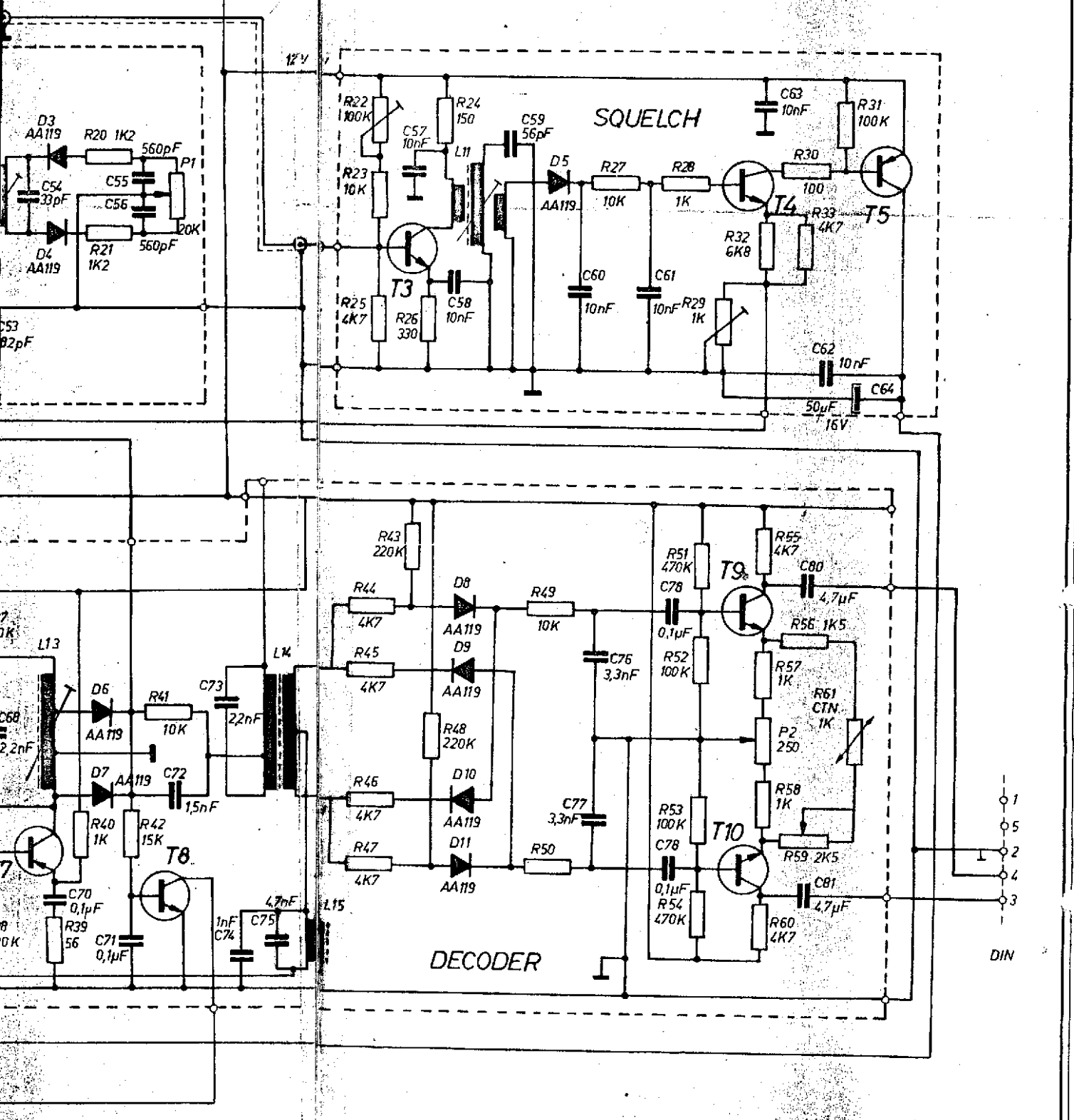
1	11,9	1	11,7
2	11,5	2	11,5
3	0	3	0
4	11,5	4	11,5
5	11,9	5	11,9
6	12,9	6	12,8



T1	AF 224	T5	BC 158	T7	BC 157
T2	BC 108	T6	BC 178	T8	BC 107
T3	BF 224	T7/9/10	BC 192	T11	SFB 635
T4	BC 148 B		BC 147	T12	SFB 636

100mH 38% Mod U_c = 200 mV

80 mV
2.25



$U_i = 200 \text{ mV } \hat{c}$