

ISP[®]

International Sound Products

***service
manual***

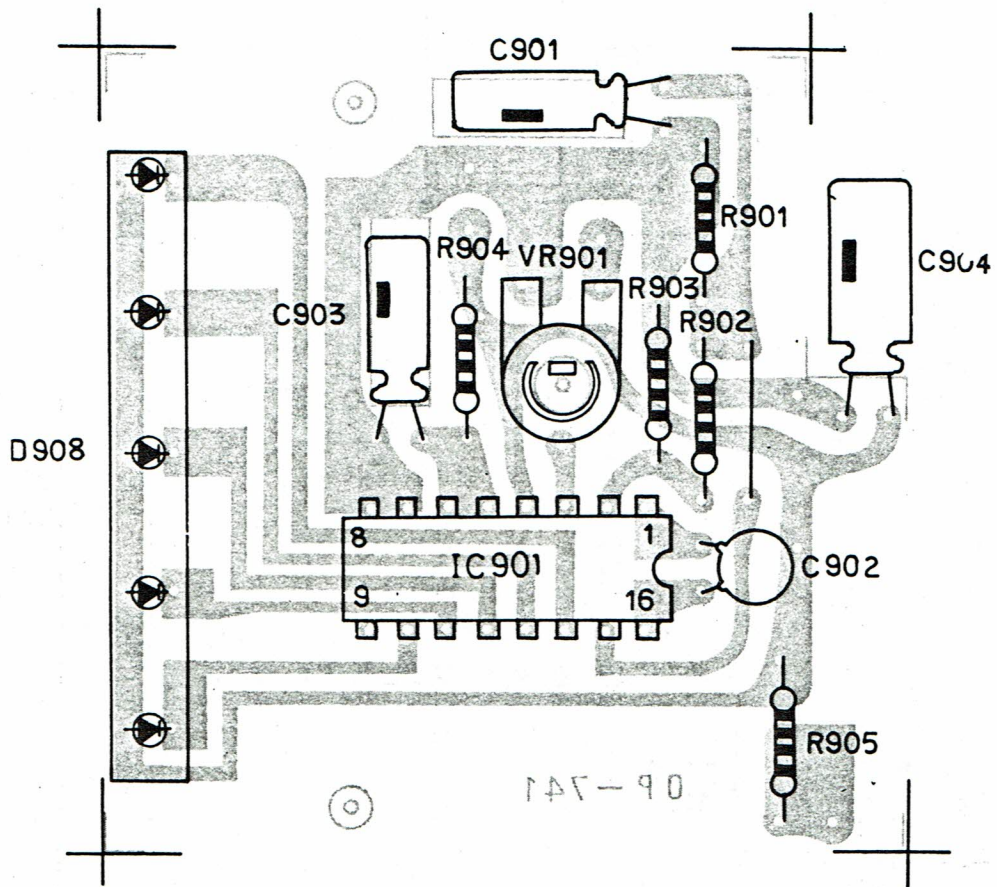
Radio

Cassette

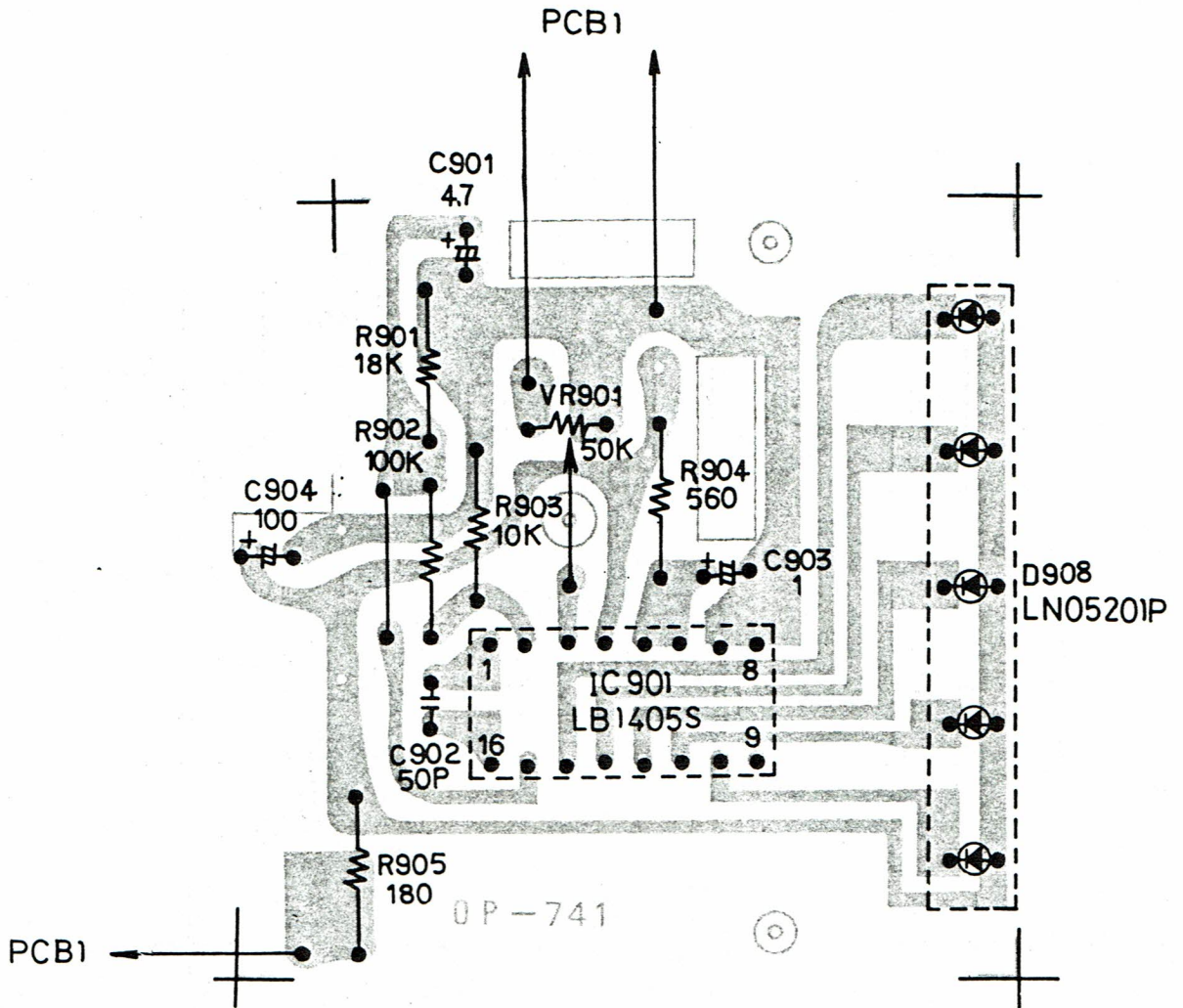
Recorder

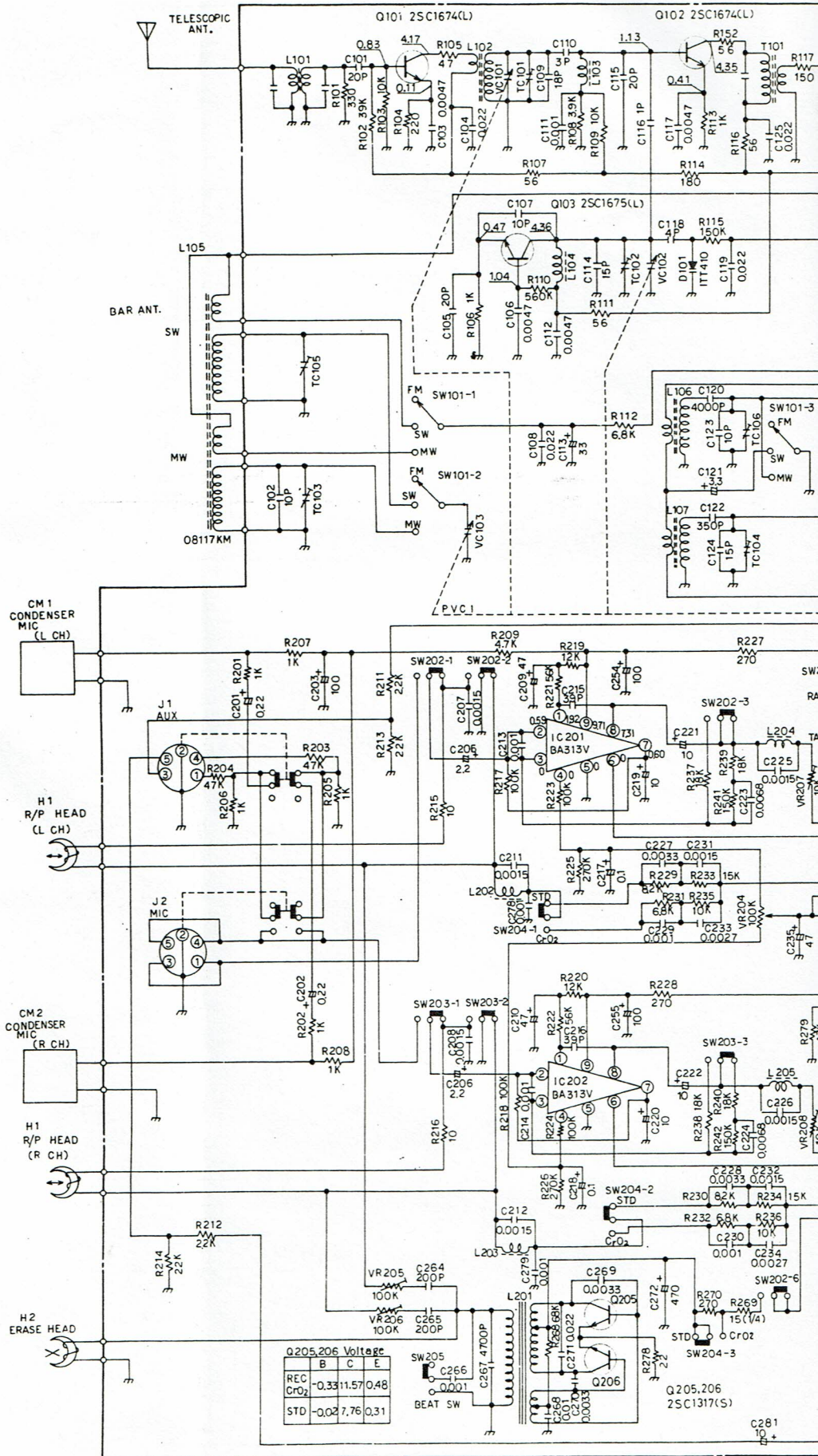
SRM 810





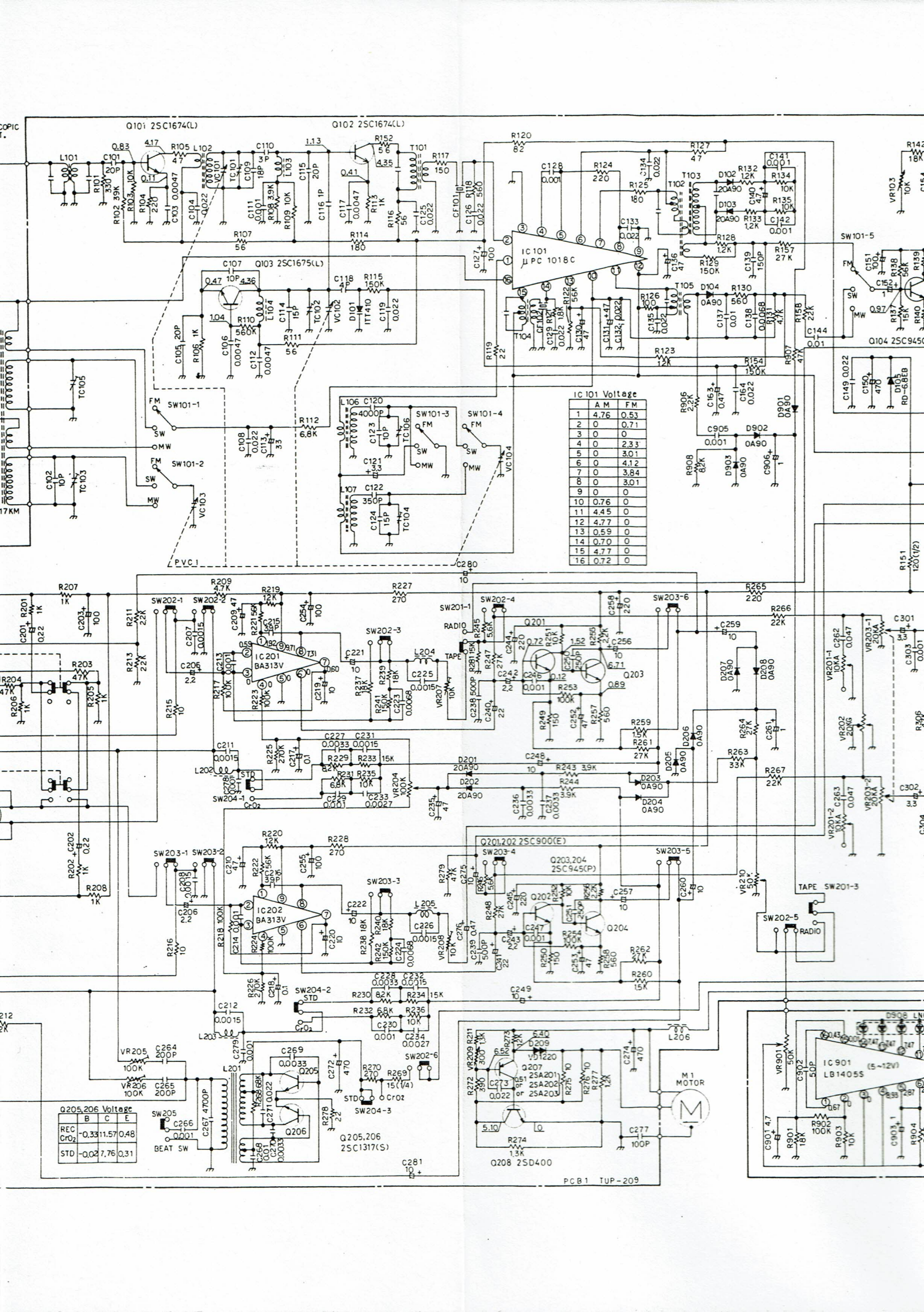
PCB 2
 OP-741
 TOP VIEW





Q205,206 Voltage			
REC	B	C	E
0.33	11.57	0.48	
STD	0.02	7.76	0.31

Q205,206
25C1317(S)

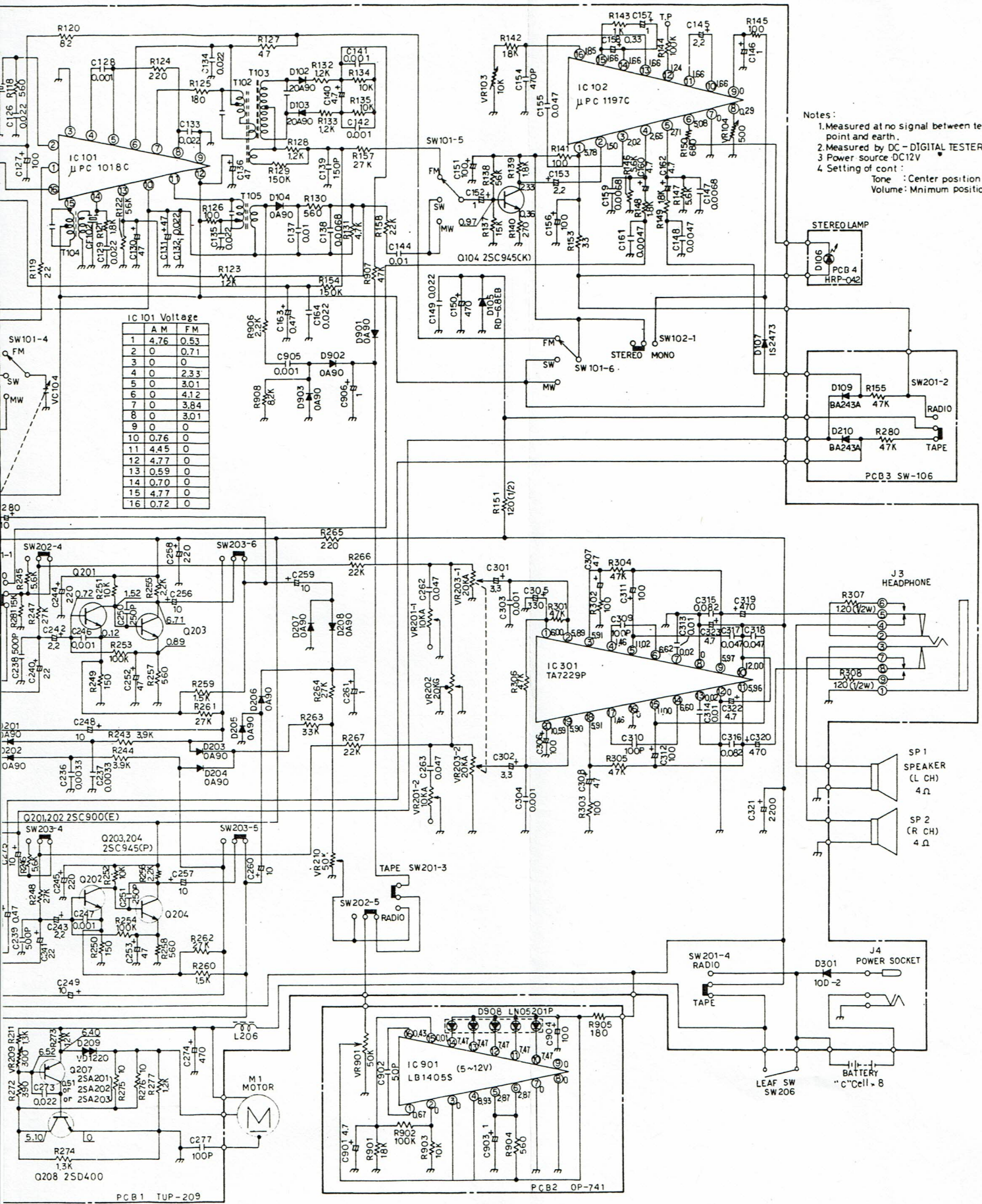


IC101 Voltage

	A M	F M
1	4.76	0.53
2	0	0.71
3	0	0
4	0	2.33
5	0	3.01
6	0	4.12
7	0	3.84
8	0	3.01
9	0	0
10	0.76	0
11	4.45	0
12	4.77	0
13	0.59	0
14	0.70	0
15	4.77	0
16	0.72	0

Q205,206 Voltage

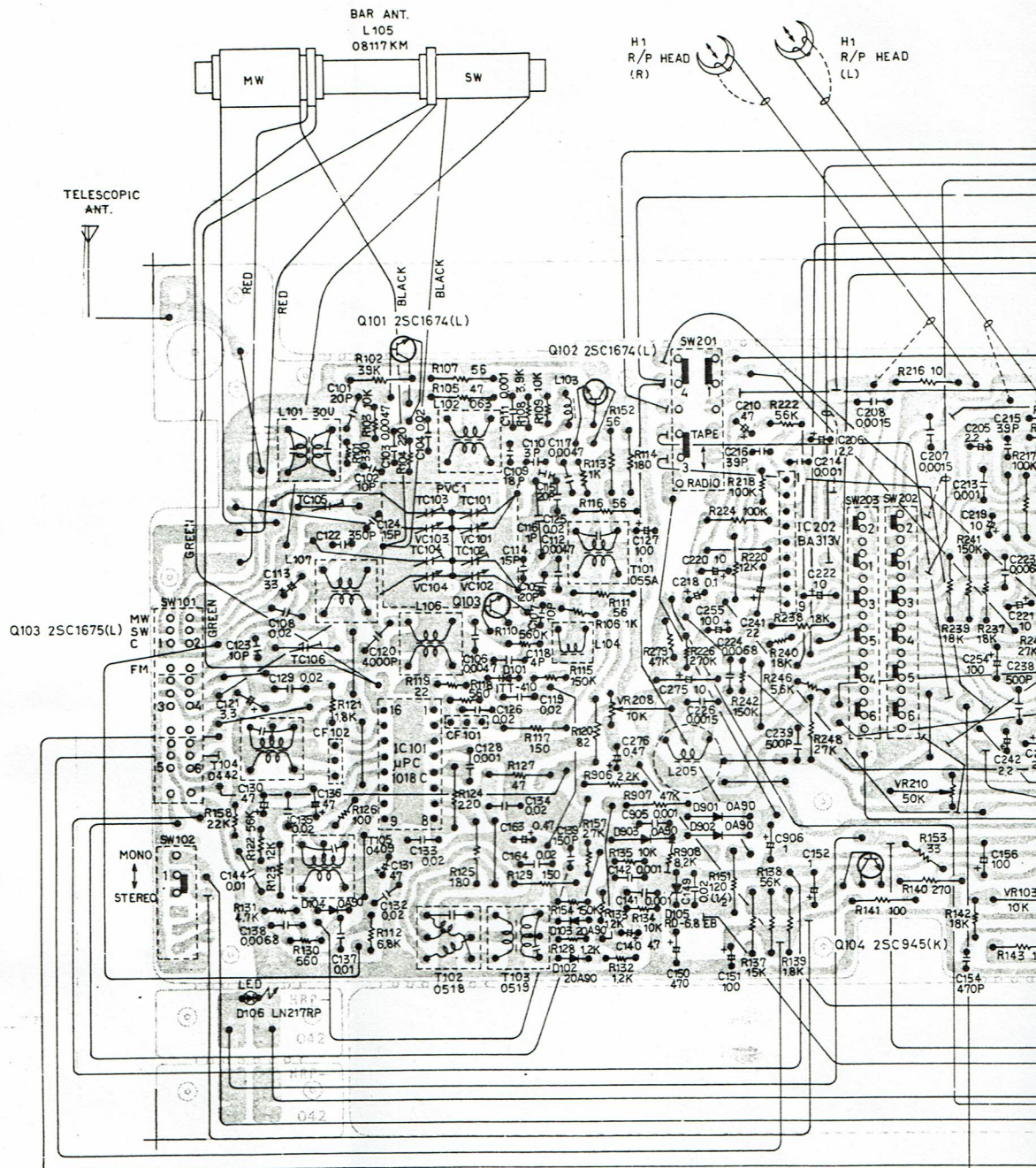
REC	B	C	E
0.33	11.57	0.48	
STD	0.02	7.76	0.31



IC101 Voltage

	A M	F M
1	4.76	0.53
2	0	0.71
3	0	0
4	0	2.33
5	0	3.01
6	0	4.12
7	0	3.84
8	0	3.01
9	0	0
10	0.76	0
11	4.45	0
12	4.77	0
13	0.59	0
14	0.70	0
15	4.77	0
16	0.72	0

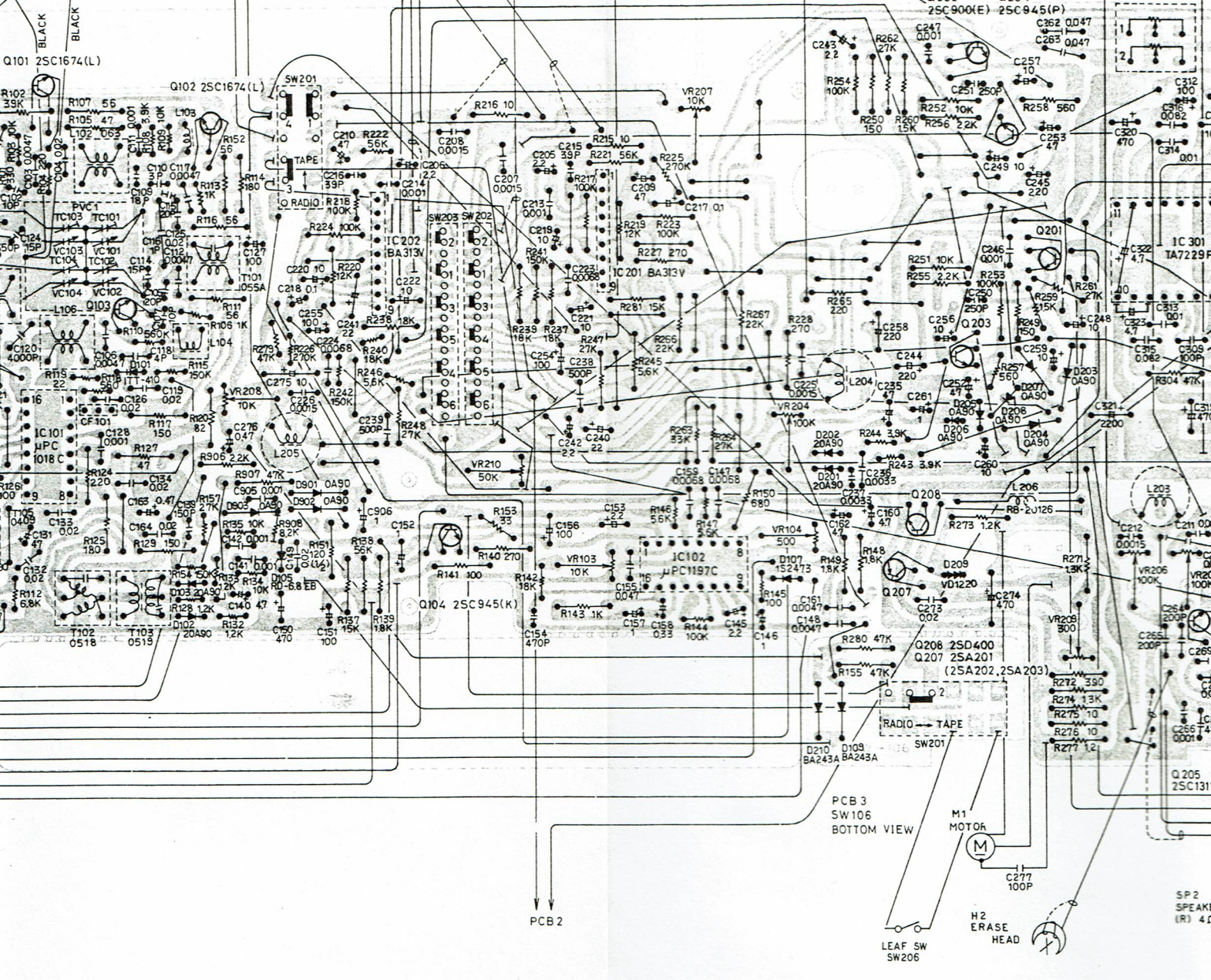
- Notes:
1. Measured at no signal between test point and earth.
 2. Measured by DC - DIGITAL TESTER.
 3. Power source DC12V
 4. Setting of cont :
Tone : Center position
Volume : Mnum position



BAR ANT.
L105
08117KM

H1
R/P HEAD
(R)

H1
R/P HEAD
(L)



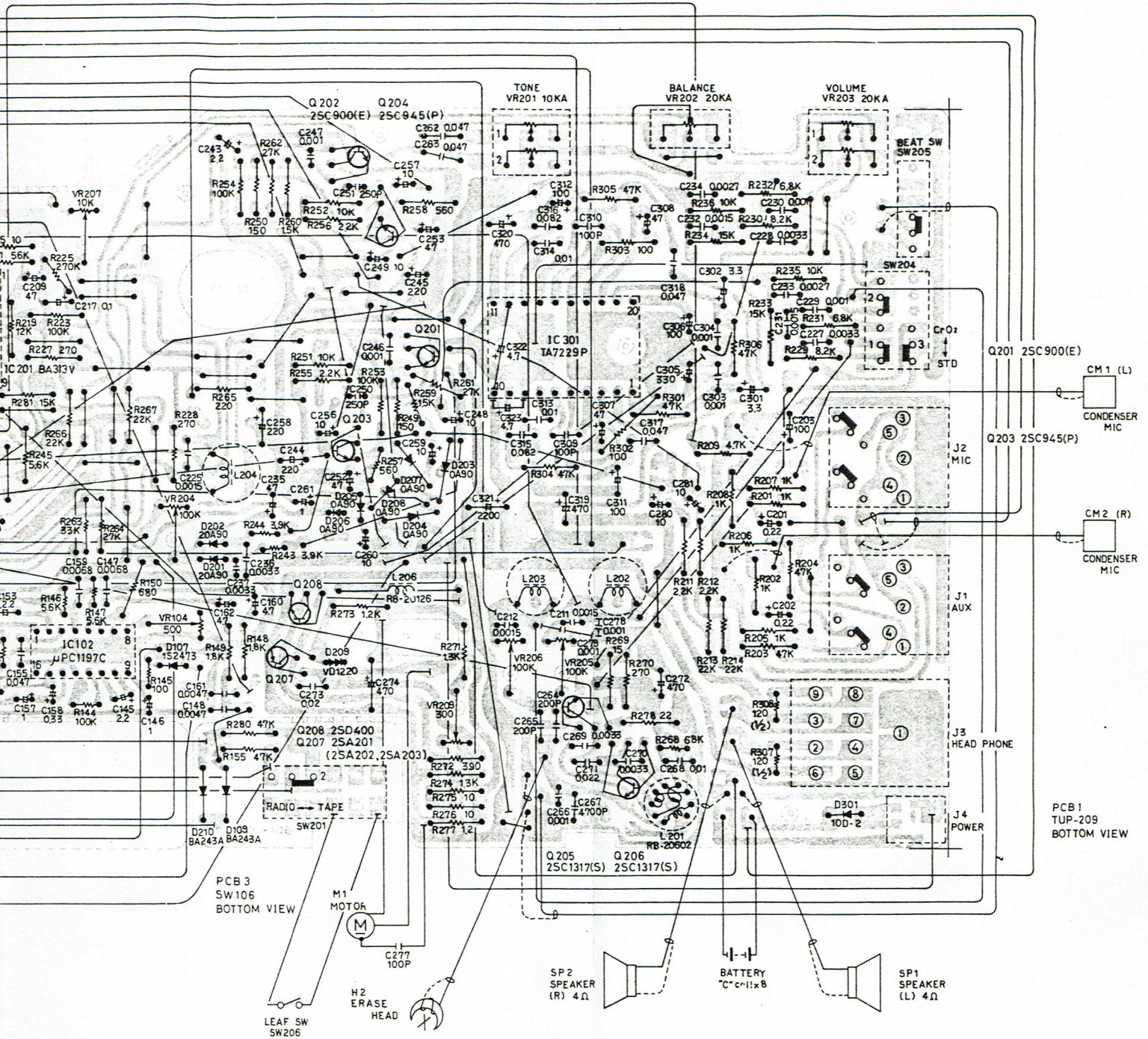
PCB 2

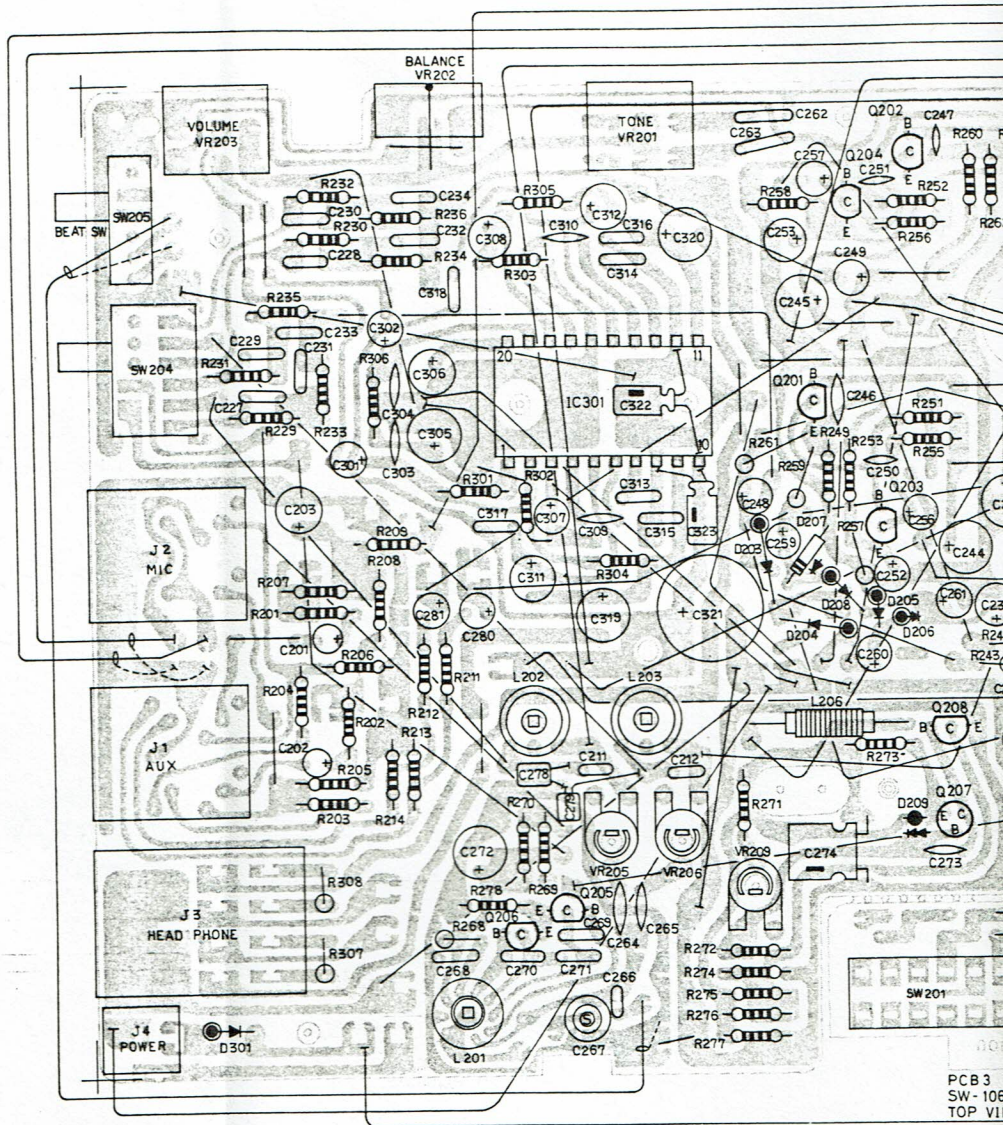
PCB 3
SW 106
BOTTOM VIEW

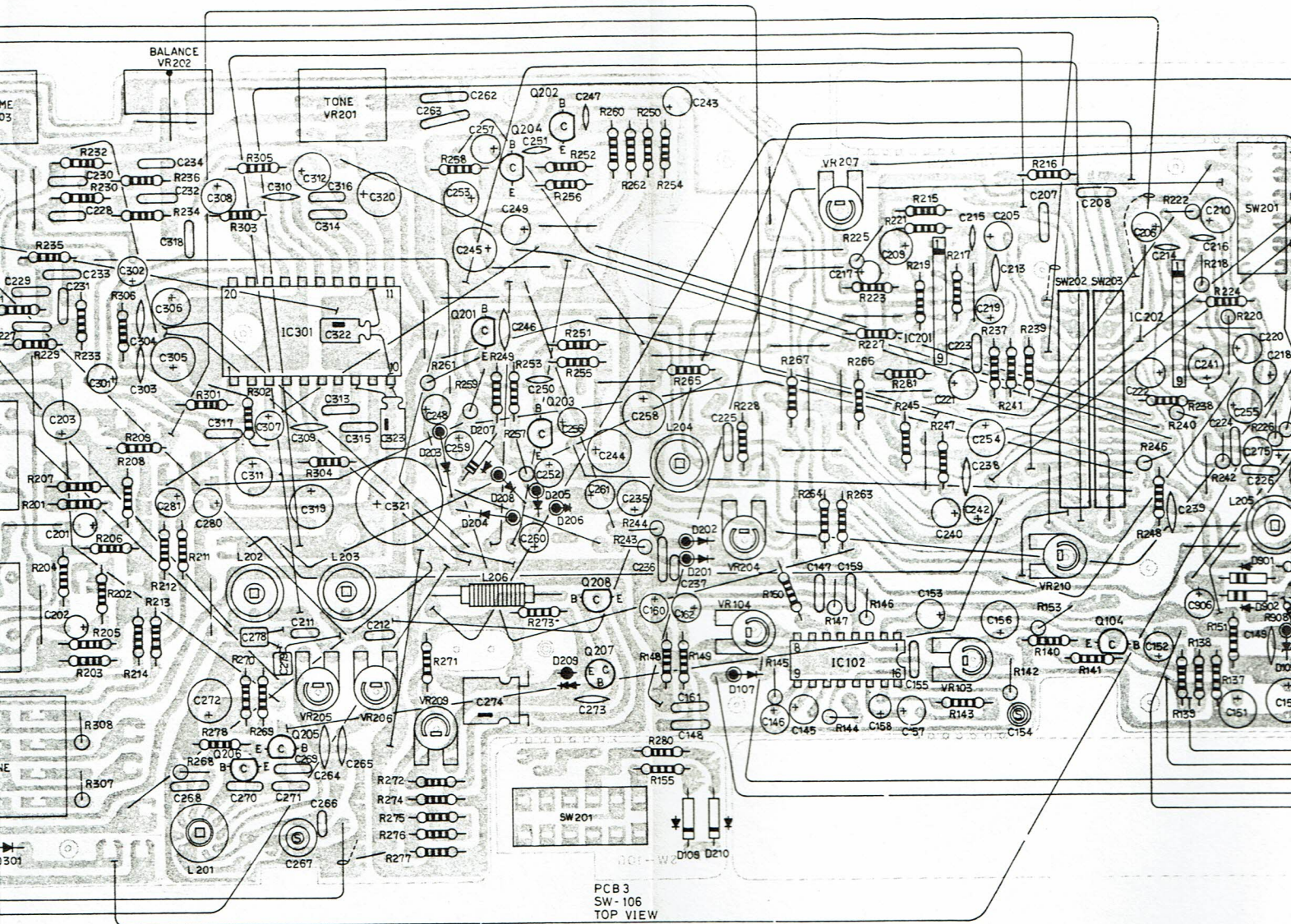
M1
MOTOR

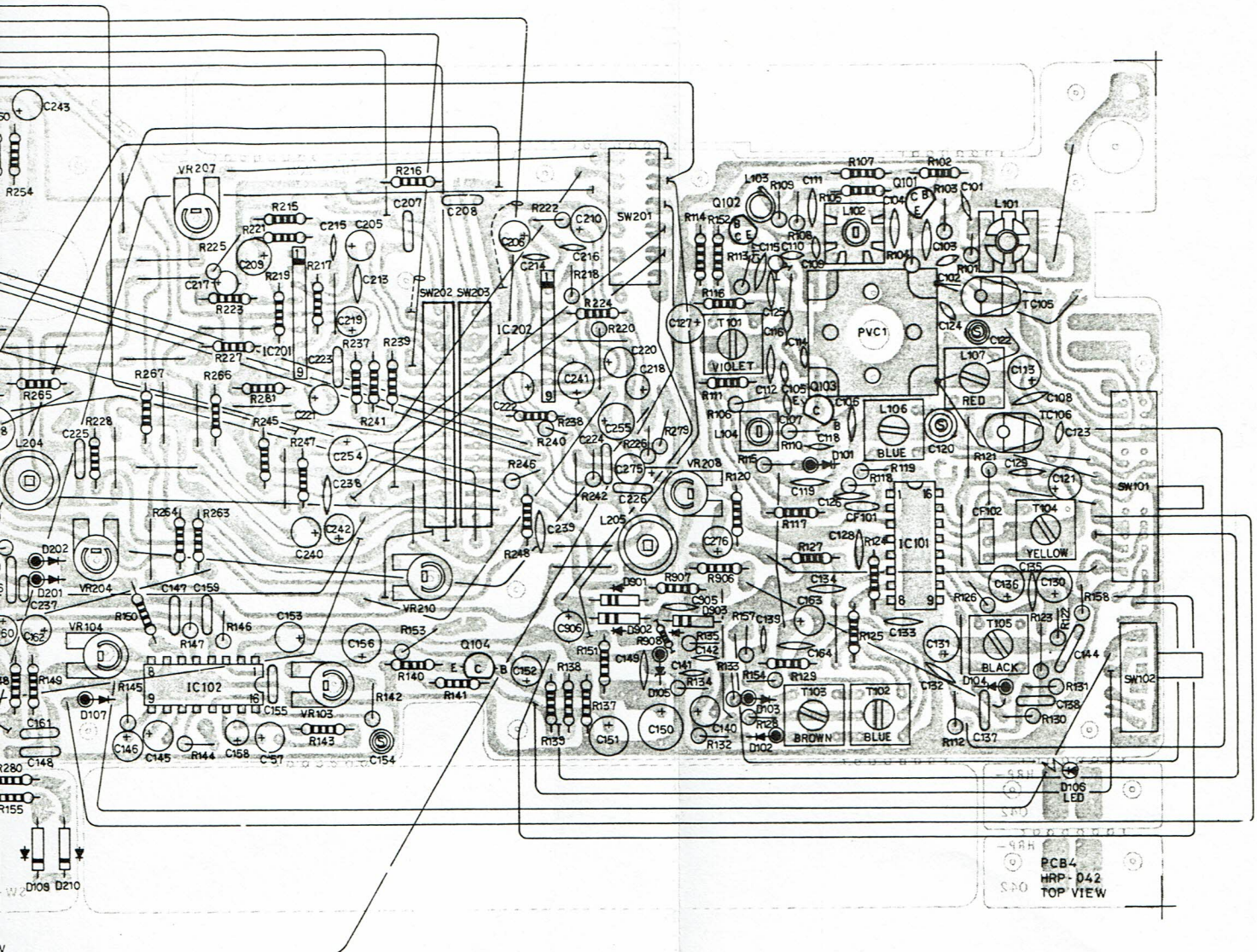
H2
ERASE
HEAD

SP 2
SPEAKER
(R) 4









PCB1
TUP-209
TOP VIEW